

RSBA(1000)

Raylinks

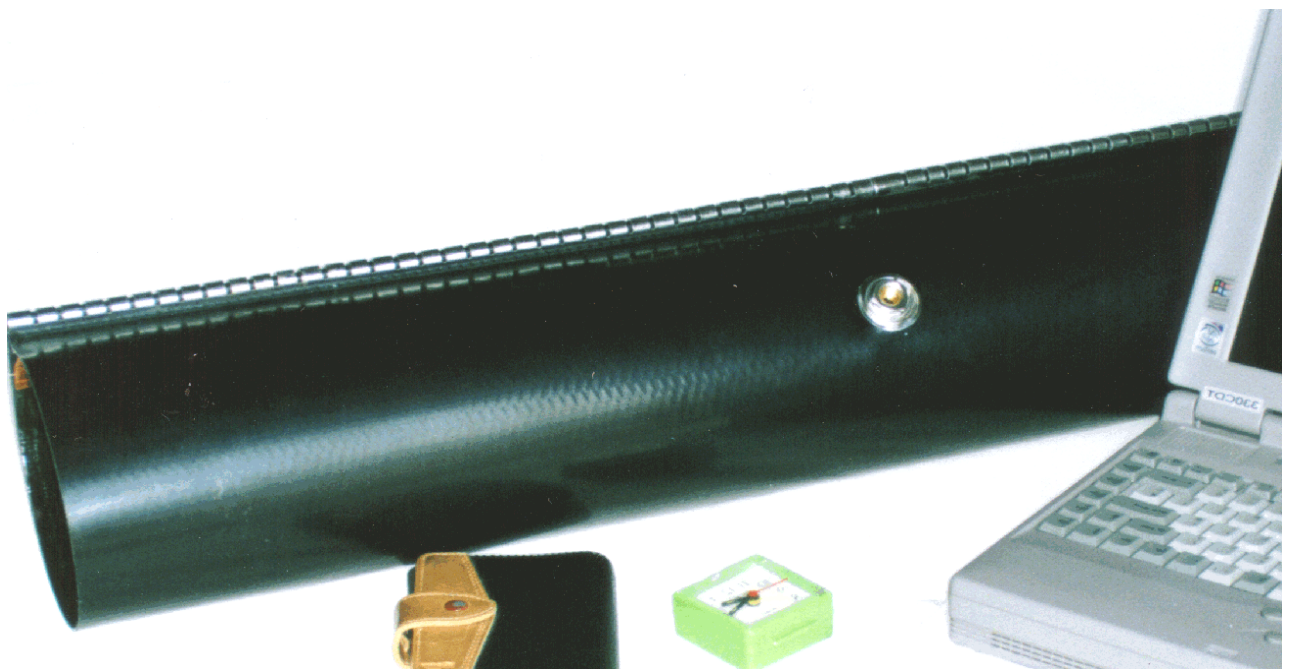
Pressurized splice closure system
43/8 62/15 92/30 122/38 160/55 200/65

RSBA pressurized splice closure system provides a fast and simple way to seal telephone cable splices in pressurized or non-pressurized telephone cable. RSBA splice closure is used for aerial, buried and underground applications on polyethylene or lead sheathed cable in sizes up to 2400 pairs.

RSBA sleeve is made of super-sleeve material, which combines the strength and durability of composite design with proven heat-shrink technology. Super-sleeve material is composed of several layers of specially blended polymers and adhesives, a fiber-reinforcing layer, and an aluminum moisture vapor barrier layer.

The fiber-reinforcing layer provides excellent mechanical strength, and eliminates the propagation of localized damage that can result from overheating or other errors in installation. Once the RSBA sleeve has been installed, the composite design of the super-sleeve material provides superior mechanical protection from forces such as impact, abrasion, UV light, and atmospheric contamination.

RSBA kit contain few components, and are simple installed. The wraparound sleeve design accommodates most cable sizes with just a few kit sizes.



All information, including illustration, is believed to be reliable. users, however, should independently evaluate suitability of the information. Raylinks makes no warranties as to the accuracy or completeness of information. our only obligations are those in the China Telecom Standard Terms and Conditions of Sale for this product.

Raylinks

Pressurized splice closure system
43/8 62/15 92/30 122/38 160/55 200/65



A fiber-reinforcing layer



sleeve



Adhesives



Canister

- ✓ Flexible stainless steel channels
- ✓ Retention clip
- ✓ Branch-off clip
- ✓ Abrasive strip
- ✓ Cleaning tissue
- ✓ Tie wrap
- ✓ Aluminum tape
- ✓ Shield continuity wire and connector
- ✓ Installation instruction



Sizing/ordering information

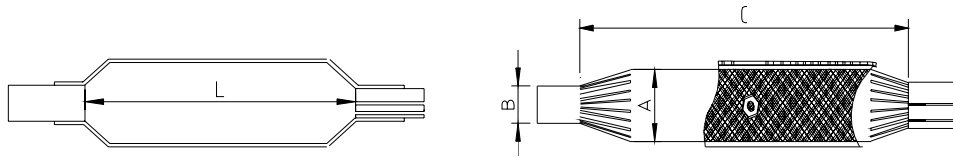
Selection chart dimensions(mm)

Cable		Canisters	Module one	Module double		Module trimple	
Pairs	dia	Dia(R)	Splice bundle(r) size	Splice bundle(r) size		Splice bundle(r) size	
100	0.4	62	35 62/15-250			—	
	0.5						
200	0.4	62	—	50	62/15-500	—	
	0.5			60	62/15-500		
400	0.4	92	—	65	92/30-500	—	
	0.5			75	92/30-500		
600	0.4	92	—	80	92/30-500	65	
	0.5			90	92/30-500	75	
800	0.4	122	—	100	122/38-500	80	
	0.5			105	122/38-500	90	
1000	0.4	122	—	110	122/38-500	100	122/38-650
	0.5			120	122/38-500	110	122/38-650
1200	0.4	160	—	125	160/55-500	110	122/38-650
	0.5			135	160/55-500	120	122/38-650
1600	0.4	160	—	130	160/55-500	125	160/55-720
	0.5			145	160/55-500	140	160/55-720
1800	0.4	160	—	135	160/55-500	130	160/55-720
	0.5			155	160/55-500	150	160/55-720
2000	0.4	160	—	160	160/55-500	140	160/55-720
	0.5			170	160/55-500	155	160/55-720
2400	0.32	200	—	165	200/65-500	150	200/65-720
	0.4			180	200/65-500	170	200/65-720
	0.5			195	200/65-500	185	200/65-720
3200	0.32	200	—	—		170	200/65-720
	0.4					190	200/65-720

RSBA(1000)

Raylinks

Pressurized splice closure system
43/8 62/15 92/30 122/38 160/55 200/65



单位：(mm)

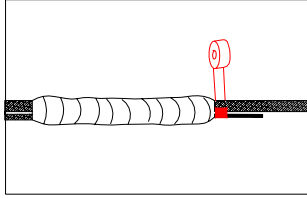
Size	Splice bundle dia (A) Max	Cable dia (B) Min	Sum of branch cable			Sheath opening nom.(L)	Nominal sheath opening
			2 out	3 out	4 out		
			Max				
RSBA43/8-350	45	8	35	-	-	350	400
RSBA62/15-250	62	15	52	40	-	250	350
RSBA62/15-350	62	15	52	40	-	350	450
RSBA62/15-500	62	15	52	40	-	500	600
RSBA62/15-650	62	15	52	40	-	650	725
RSBA92/30-300	92	30	82	70	58	300	422
RSBA92/30-350	92	30	82	70	58	350	446
RSBA92/30-500	92	30	82	70	58	500	600
RSBA92/30-650	92	30	82	70	58	650	750
RSBA122/38-300	122	38	112	100	88	300	425
RSBA122/38-500	122	38	112	100	88	500	600
RSBA122/38-650	122	38	112	100	88	650	750
RSBA160/55-300	160	55	142	130	118	300	450
RSBA160/55-500	160	55	142	130	118	500	650
RSBA160/55-650	160	55	142	130	118	650	815
RSBA200/65-500	200	65	172	160	148	500	650
RSBA200/65-720	200	65	172	160	148	720	825

All information, including illustration, is believed to be reliable. users, however, should independently evaluate suitability of the information. Raylinks makes no warranties as to the accuracy or completeness of information. we only obligations are those in the China Telcom Standard Terms and Conditions of Sale for this product.

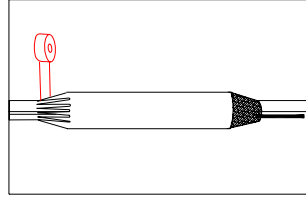
Raylinks

Pressurized splice closure system
43/8 62/15 92/30 122/38 160/55 200/65

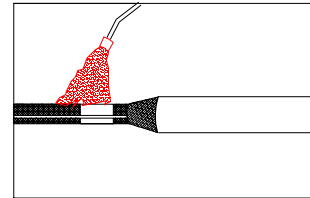
Installation Summary



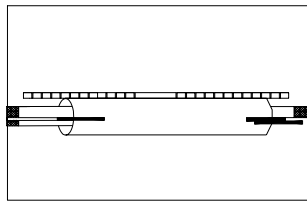
1、 Install



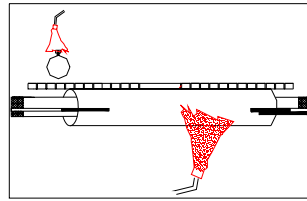
2、 Center the metal canister over the splice



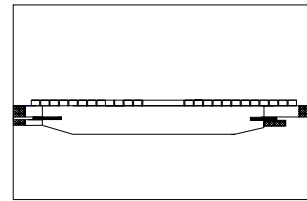
3、 Clean ,abrade and flame brush cable



4、 Wrap the sleeve around the canister



5、 Shrink sleeve



6、 Completed closure