

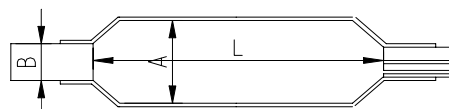
OPERATION



- Heat Shrinkable Sleeve
- Metal Canister
- Channels with under clip
- Branch off kit
- Shield Continuity wire
- Abrasive strip
- Cleaning tissue
- Bond line gauge
- Aluminum foil
- Desiccant
- Installation procedure

Sizing / ordering information

(Dimensions in mm)



Description	Max splice bundle Diameter (A)	Min cable Diameter (B)	Nominal sheath Opening (L)
RSBJ 550 43/8-200	43	8	200
RSBJ 550 43/8-500	43	8	500
RSBJ 550 75/15-250	75	15	250
RSBJ 550 75/15-500	75	15	500
RSBJ 550 75/15-650	75	15	650
RSBJ 550 92/25-500	92	25	500
RSBJ 550 92/25-650	92	25	650
RSBJ 550 122/30-500	122	30	500
RSBJ 550 122/30-650	122	30	650
RSBJ 550 160/42-500	160	42	500
RSBJ 550 160/42-720	160	42	720

BOKT KIT CONTENT

- Branch off clip
- Cleaning tissue
- Tie wrap
- shield continuity clip + connector
- aluminium foil





Prepared cables, cut and remove cable sheath .



Wrap several layers of PVC tape over cable Strain the end cable



Applying desiccant, wrapped by PVC tape



Attach shield continuity wire to cable sheath with clip.



Tightly wrapping closure with PE Packbag



Center the metal canister over splice



Seal canister in right place with aluminum foil strip



Tightly wrap one half-lapped over canister with adhesive tape



Clean cable sheath at least 100 mm from canister with tissue



Abrade the cable sheath circumferentially On the cleaned area with the abrasive strip



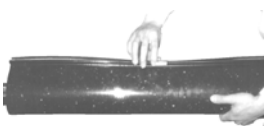
Place a mark on the cable just outside the edge of the sleeve



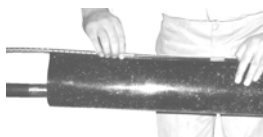
Wrapping aluminum foil strip over mark 10mm



Flame brush cable



Installing shrinkable sleeve, line sleeve up with mark on cable



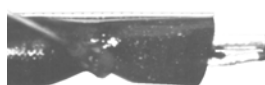
Slide on channel



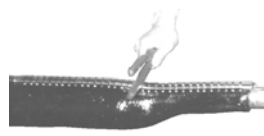
Install branch clip slipping clip over sleeve as far as possible



Continue heating evenly around sleeve from center to end until entire sleeve is recovered



Completed sleeve installation



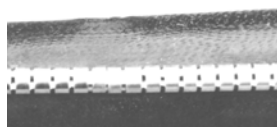
Tap channel down to conform to cable



Strain cables with tie wrap



Continue heating until melted red adhesive is visible from the end.



White line is visible



Operation Completely